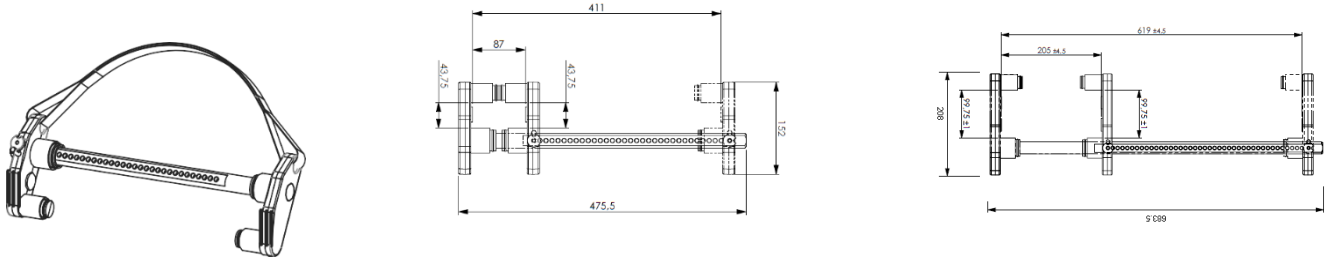


APPLICATIONS

The rollclamp anchorage device provides optimum safety against falls from height for people working on metal structures. The use of rollclamp on site as an anchor point fall guaranteed to the operator a great freedom of movement.



rollclamp M

rollclamp L

DESCRIPTION

The rollclamp anchoring device is intended exclusively for mooring a personal protection system against falling heights, for example an energy absorbing lanyard or a retractable lanyard blocfor™. The rollclamp can be installed on the upper or lower flange of the I-beam or H-beam depending on whether the user moves on the latching beam or below the latching beam. The placement of the rollclamp on the beam is easily done using the movable jaw sliding and lockable automatically on the adjusting rod.

The rollclamp M is intended to be installed on a beam I or H whose width is between 90 mm and 400 mm
The rollclamp L is intended to be installed on a beam in I or H whose width is between 200 mm and 615 mm

TECHNICAL CHARACTERISTICS

The presentation characteristics of rollclamps M and L are:

- A fixed aluminium casting jaw welded at the end of an aluminium adjustment rod for attachment to one side of the I beam or H.
- A movable aluminium sliding casting jaw on the aluminium adjustment rod for attachment to the other side of the I-beam or H.
- A polyamide webbing for the operator connection.

APPLICABLE STANDARDS

Complies with CE EN 795 B/2012

Is compatible for a max operating load of 150kg

MAIN COMPONENTS

Code	Description	EAN Code	Weight (incl. packaging)	Packaging size
086009	rollclamp M	3600230860091	1.6kg	476x152x80
086019	rollclamp L	3600230860190	2.1 kg	684x208x90